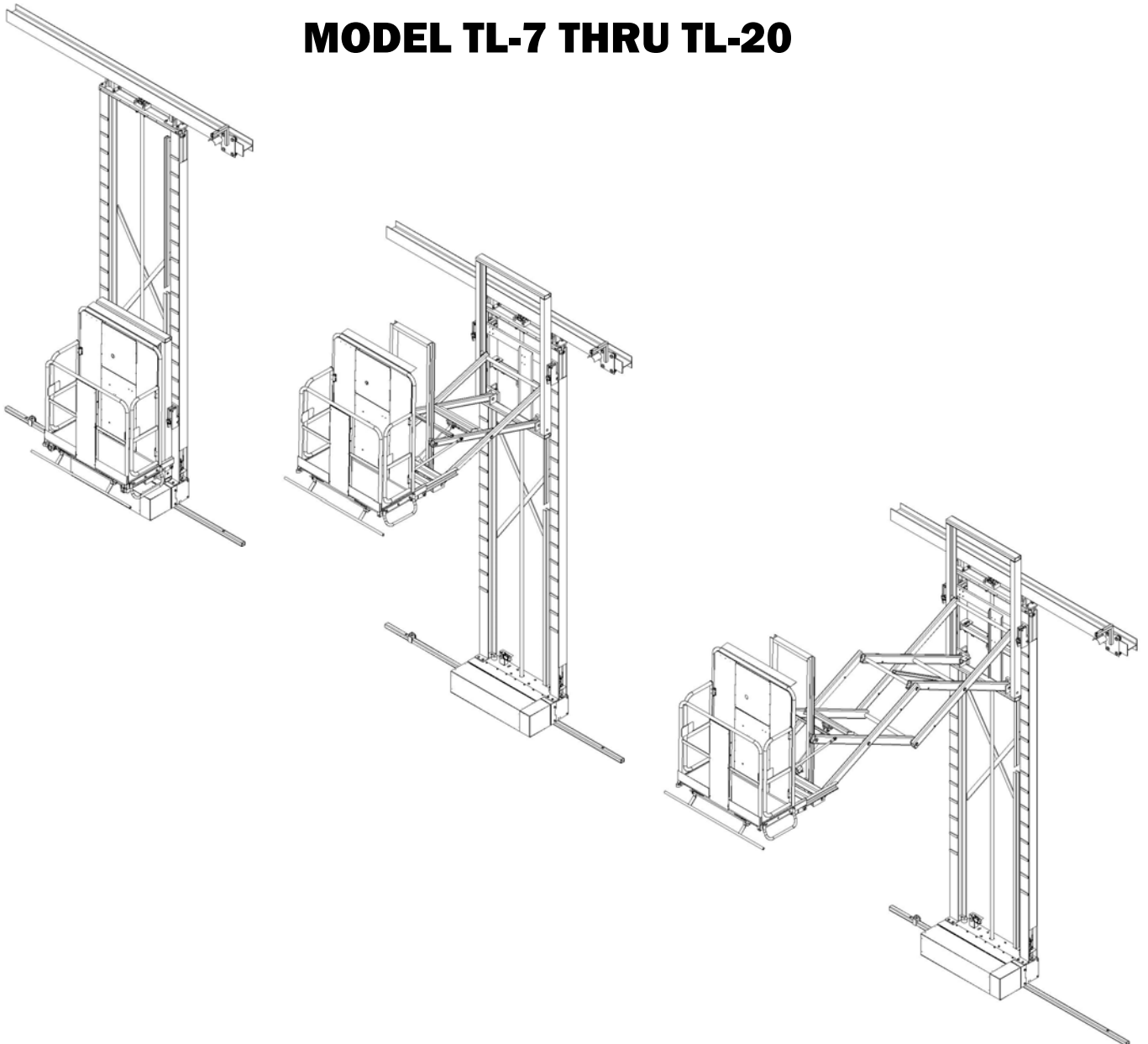


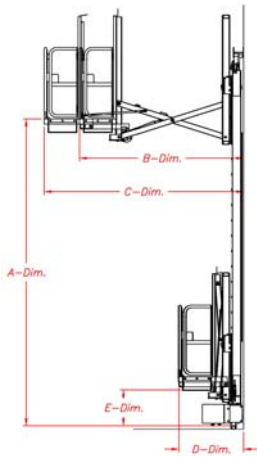


THREE AXIS PERSONNEL LIFT

PRODUCT SPECIFICATIONS

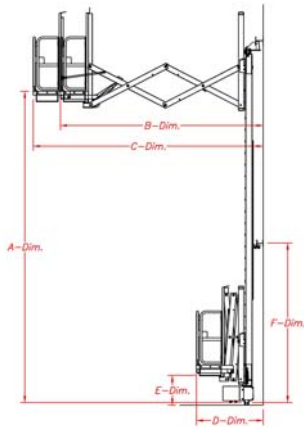
MODEL TL-7 THRU TL-20





SINGLE SCISSORS—THREE AXIS

Model Number	Max. Working Height (Floor to Basket—A Dim.)	Max. Horizontal Extension (Wall to Basket—B Dim.)	Horiz. Extension With “Auto Roll-Out” (Wall to Basket—C Dim.)	Fully retracted basket (Wall to Basket—D Dim.)	Floor to First Step (E Dim.)
TL-7	7'-0"	8'-0"	9'-9"	3'-2"	2'-1"
TL-8	8'-0"	8'-0"	9'-9"	3'-2"	2'-1"
TL-9	9'-0"	8'-0"	9'-9"	3'-2"	2'-1"
TL-10	10'-0"	8'-0"	9'-9"	3'-2"	2'-1"
TL-11	11'-0"	8'-0"	9'-9"	3'-2"	2'-1"
TL-12	12'-0"	8'-0"	9'-9"	3'-2"	2'-1"
TL-13	13'-0"	8'-0"	9'-9"	3'-2"	2'-1"
TL-14	14'-0"	8'-0"	9'-9"	3'-2"	2'-1"
TL-15	15'-0"	8'-0"	9'-9"	3'-2"	2'-1"
TL-16	16'-0"	8'-0"	9'-9"	3'-2"	2'-1"
TL-17	17'-0"	8'-0"	9'-9"	3'-2"	2'-1"
TL-18	18'-0"	8'-0"	9'-9"	3'-2"	2'-1"
TL-19	19'-0"	8'-0"	9'-9"	3'-2"	2'-1"
TL-20	20'-0"	8'-0"	9'-9"	3'-2"	2'-1"



DOUBLE SCISSORS—THREE AXIS

Model Number	Max. Working Height (Floor to Basket—A Dim.)	Max. Horizontal Extension (Wall to Basket—B Dim.)	Horiz. Extension W/ “Auto Roll-Out” (Booth Wall to Basket—C Dim.)	Fully retracted basket (Wall to Basket—D Dim.)	Floor to First Step (E Dim.)	Intermediate Rail (F Dim.)
TL-7	7'-0"	12'-6"	14'-3"	3'-9"	2'-1"	NA
TL-8	8'-0"	12'-6"	14'-3"	3'-9"	2'-1"	NA
TL-9	9'-0"	12'-6"	14'-3"	3'-9"	2'-1"	NA
TL-10	10'-0"	12'-6"	14'-3"	3'-9"	2'-1"	NA
TL-11	11'-0"	12'-6"	14'-3"	3'-9"	2'-1"	NA
TL-12	12'-0"	12'-6"	14'-3"	3'-9"	2'-1"	NA
TL-13	13'-0"	12'-6"	14'-3"	3'-9"	2'-1"	NA
TL-14	14'-0"	12'-6"	14'-3"	3'-9"	2'-1"	NA
TL-15	15'-0"	13'-1"	14'-10"	4'-4"	2'-1"	10'3"
TL-16	16'-0"	13'-1"	14'-10"	4'-4"	2'-1"	10'3"
TL-17	17'-0"	13'-1"	14'-10"	4'-4"	2'-1"	10'3"
TL-18	18'-0"	13'-1"	14'-10"	4'-4"	2'-1"	10'3"
TL-19	19'-0"	13'-1"	14'-10"	4'-4"	2'-1"	10'3"
TL-20	20'-0"	13'-1"	14'-10"	4'-4"	2'-1"	10'3"

THREE AXIS PERSONNEL LIFT

MODEL TL-7 THRU TL-20

SPECIFICATIONS

Features

- 1. Lift capacity—500#**
- 2. Vertical Lift (Z Axis)**
 - A. Lift Height (Floor to Basket) - 7 Ft. to 20 Ft. in 1 Ft. increments. See attached Model Number and Dimension Schedule.**
 - B. Lift Rate—Maximum travel of 15 Feet Per Minute (adjustable)**
 - C. Lift Drive Mechanism—Air motor, gearbox, driven ball screw.**
 - D. Lift Control—Pneumatic Joy Stick located on basket mounted control panel. The Joy Stick is moved in the desired direction of travel.**
- 3. Horizontal Travel (X Axis)**
 - A. Travel Rate—Forward & reverse with maximum travel up to 40 Feet Per Minute (adjustable)**
 - B. Travel Drive Mechanism—Air motor, gearbox, 2 cast aluminum wheels chain driven.**
 - C. Floor Track—The aluminum wheels ride in a floor track that is anchored to the floor.**
 - D. Horizontal Control—Pneumatic Joy Stick located on the basket mounted control panel. The Joy Stick is moved in the desired direction of travel.**
- 4. Basket Extension (Y Axis)**
 - A. Travel Rate—In/Out with maximum travel up to 15 Feet Per Minute (adjustable)**
 - B. Travel Distance - Single Scissors Extension - 8'-0"**
Double Scissors Extension - 12'-6"
 - C. Automatic Roll-Out Option—A telescoping extension can be provided as an option on both the Single and Double Scissors. This adds 1'-9" to the fully extended dimension. See attached Model Number and Dimension Schedule.**
 - D. Extension Drive Mechanism—Air motor and linear actuator.**
- 5. Safety Features**
 - A. Emergency Stop—Shuts off air supply to lift control panel.**
 - B. Emergency “Down” Push Button—Auxiliary air receiver mounted on the mast frame allows the basket to be lowered when main air supply is interrupted.**
 - C. Lockable Hand Valve—Provided on main air supply to the lift.**
 - D. Auxiliary Z Axis Control—Push buttons located at the lift base allows ground personnel to raise or lower the lift.**
 - E. Air Brake on Z Axis Drive Mechanism—In the event of air pressure loss, the air brake is automatically engaged to prevent uncontrolled descent of the basket.**
 - F. Mechanical Stop on Z Axis—In the event of a sudden drop of the basket due to a mechanical failure, a mechanical stop is automatically engaged on the vertical mast. This stop prevents free fall of the basket.**